

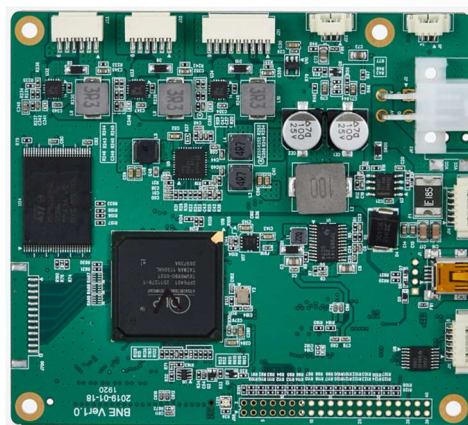
# BNE Board

## System Highlights

- 0.45" WXGA DLP Driver Board
- DLPC350 Chipset
- R/G/B Light Source
- Up to 4225 Hz 1bit,  
120 Hz 8-bit pattern rate
- LightCrafter 4500 Compatible

## Application

- 3D Scanner
- Model Scanner, Face/Body Scanner



| Parameter      | Specification | Remarks             |
|----------------|---------------|---------------------|
| DLP Controller | DLPC350       |                     |
| Resolution     | 1280 x 800    | Native 912 x 1140   |
| Memory         | 32MB          | Pattern storage     |
| Trigger        | In/Out        | programmable        |
| Control        | USB           | USB-based API & GUI |
| DLP Firmware   | 4.0           | TI                  |
| Power          | 24V/2A        | Molex 5569-04A1     |
| Size (WxD)     | 86 x 96 mm    |                     |