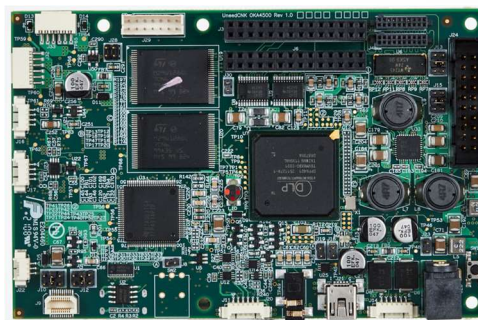


OKA Board

System Highlights

- 0.45" WXGA DLP Driver Board
- DLPC350 Chipset
- R/G/B Light Source
- Up to 4225 Hz 1bit,
120 Hz 8-bit pattern rate
- Fully Compatible of TI
LightCrafter 4500



Application

- 3D Scanner
- Model Scanner, Face/Body Scanner

Parameter	Specification	Remarks
DLP Controller	DLPC350	
Resolution	1280 x 800	Native 912 x 1140
Memory	32MB	Pattern storage
Trigger	In/Out	programmable
Control	USB	USB-based API & GUI
DLP Firmware	4.0	TI
Power	12V/6A	2.5 \varnothing (Inner diameter)
Size (WxD)	122x 79 mm	